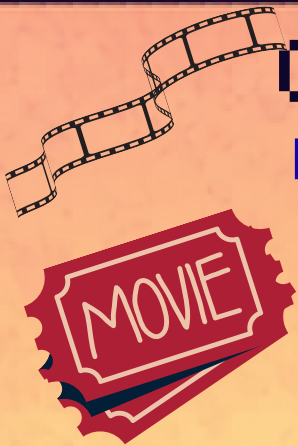


Charlie Brown Squares
Invite You To
Drive Away Cancer

← JUNE 6, 2026 →



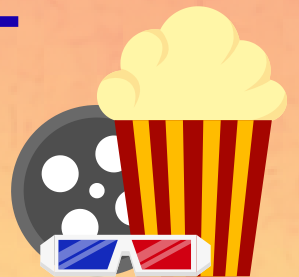
CALLER: ROGER PUTZLER

CUER: SARGE GLIDEWELL

\$10 ADULT / \$5 YOUTH

7PM PRE ROUNDS

730PM SQUARES

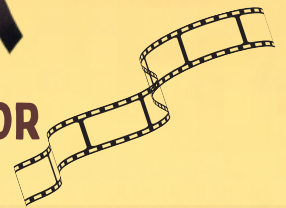


DONATIONS ACCEPTED FOR AMERICAN CANCER SOCIETY



JOSEPHINE COUNTY FAIRGROUNDS, GRANTS PASS OR

MORE INFO: TOM (541)761-8532



SQUARE DANCE ATTIRE ADMIRER, NOT REQUIRED
HEARING ENHANCEMENT AVAILABLE



WWW.CHARLIEBROWNSQUARES.COM
FACEBOOK [A]CHARLIEBROWNSQUARES